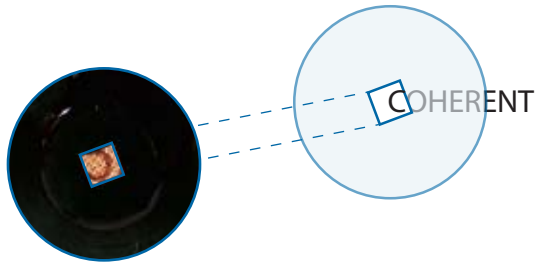
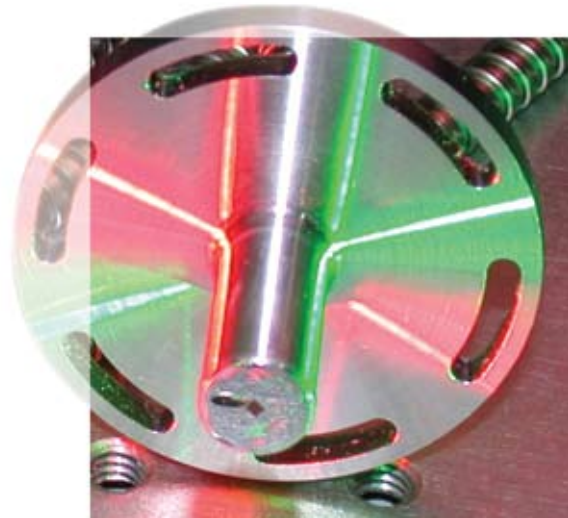
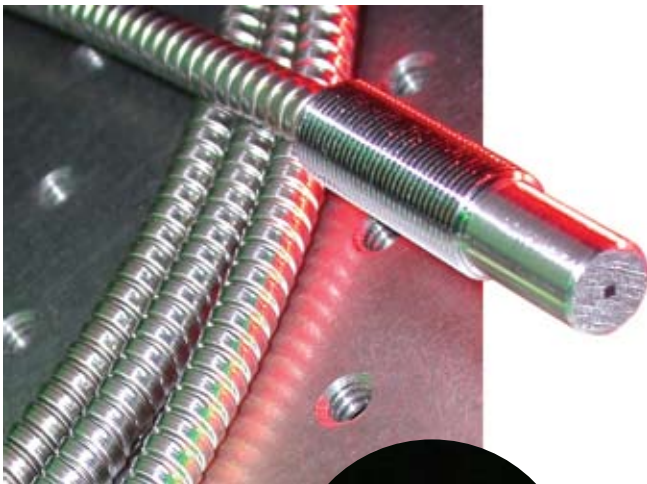


COHERENT BUNDLE

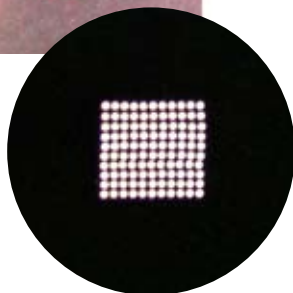


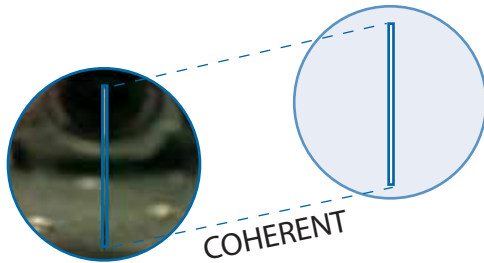
FEATURES

- 10 x 11 coherent 2D array,
- 100 μ m core fibers
- fibers arranged on a rectangular grid
- high vacuum compatible
- cryogenic temperature compatible
- no broken or swapped fibers allowed



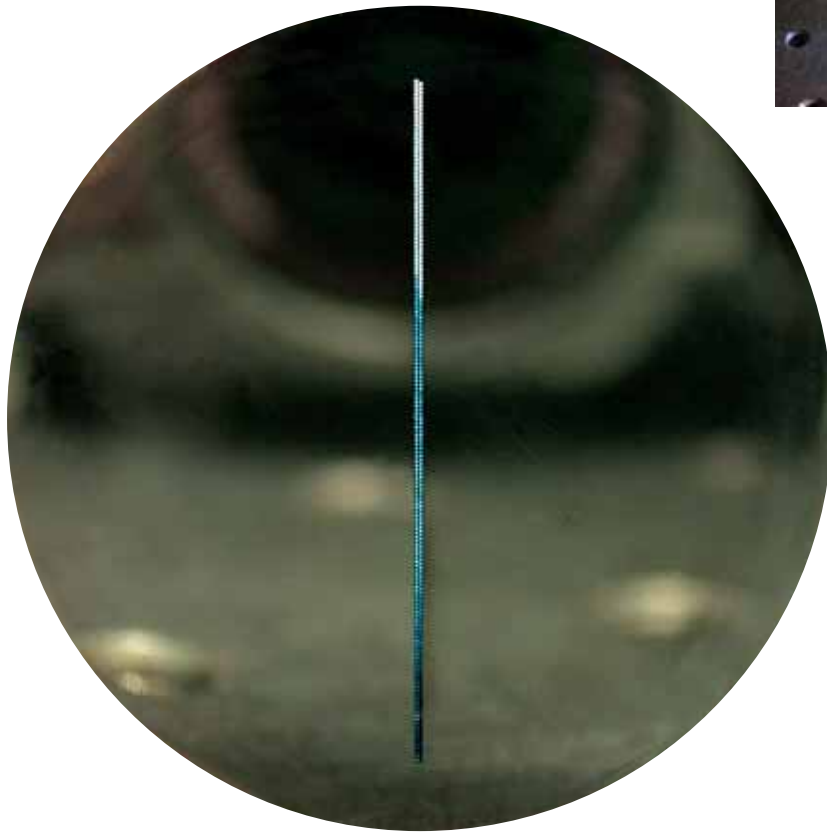
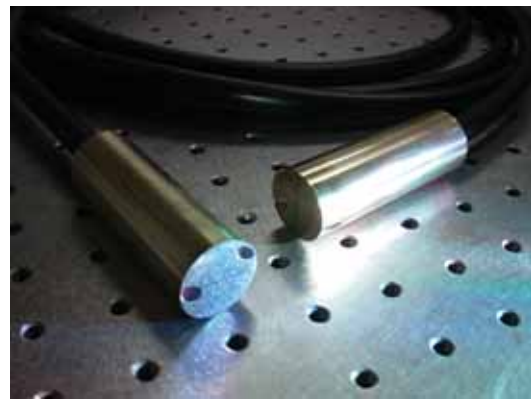
View of
the endface





FEATURES

- 2 x 167 coherent linear array
- 100 μ m core fibers
- 2 broken fibers



*View of
the endface*

