



COMPACT RAMAN PROBE

Patent pending optical design enables independent configuration of emission and collection channels to optimize measurement by considering both the sample (solid or liquid) and the system (spectrograph and camera) used.



FEATURES

- Configured to match spectrograph/ camera system
- High collection efficiency (f/2) optics
- Internal filtering
- Configurable collection bundle output (bundle or slit)
- Rugged assembly with no moving parts

SPECIFICATIONS

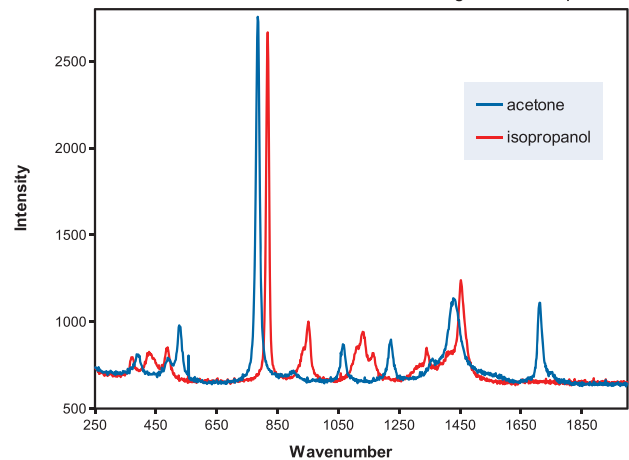
- Excitation: 785 nm wavelength, 300 mW maximum
- Overall length: 2 meters
- Laser blocking: better than OD6
- Collection interval: 250-3500 cm^{-1}
- Output format: linear array
- Connectors: emission - FC; collection - SMA or custom ferrule

Model	FRP785S038	FRP785S127
Spot size	600 μm	900 μm
Working distance	4.3 mm	17.3 mm
Depth of field	+/-2 mm	+/-6 mm
Probe tip diameter	3.8 mm	12.7 mm
Probe tip length	40 mm	80 mm
Excitation fiber	100 μm core	100 μm core
Collection bundle	19 x 100 μm	19 x 100 μm

OPTIONS

- Excitation wavelength: 532, 830, 1064 nm
- Fiber diameter: 50 μm core, 200 μm core
- Working distance: 0 to 50 mm
- Reference channel for calibration

Acetone and Isopropanol Raman Spectra Comparison
raw signals, 1 s acquisition



Painkiller Tablet Raman Spectra Comparison
raw signals, 1 s acquisition

